



IZOD silver crest
nineteen thirty-seven

Double duty looks for the working woman. Fashion that works for you.

Since 1937, IZOD has been synonymous with colorful, fashion-forward takes on updated classic styles. In that rich tradition, the new IZOD Silver Crest collection now brings IZOD style to work. Quality construction is expressed in mix-and-match wardrobe essentials that are both sophisticated and fun – perfect for the office and designed for your active life.

This season, tailored bottoms team up with chic, feminine jackets, novelty sweaters, plus blouses and shirts that are big on exciting, surprising details. Shirts – whether solid white, richly hued, paisley-inspired or in the prettiest of floral prints – take IZOD style to another level. Take IZOD Silver Crest to the office and feel right at home. IZOD Silver Crest, *nineteen thirty-seven*.



sweater 4896023 \$45.00
Mocha Heather (*shown*),
Wild Mulberry

I/s blouse 4897427 \$50.00
Almond Heather (*shown*)

pant 4894000 \$58.00
Brown (*shown*)

For inquiries please contact:
Andra Mielnicki
Behrman Communications
212.986.7000
amielnicki@behrmanpr.com

IZOD.COM

IZOD

WOMEN'S FALL '09 LOOKBOOK





AUDACIOUS ARGYLES, excitingly-rich textures and new, fresher takes on autumnal colors, combined with updated CLASSIC DETAILS adding youthful vigor to OLD SCHOOL STYLE. Comfortably-sexy, casually-dressed-up fashion pairs with the latest in form-loving jeans. The IZOD SECRET SLIMMING, Tummy Panel Jeans and untraditionally-traditional fashion add sparkle to even the grey days of fall.

BERRY-FRESH AND BOHO BEAUTIFUL.



LOOK 1

s/s sweater 4836207 \$50.00
Vintage Wine (shown),
Harvest Brown, Symphony Blue
l/s blouse 4837461 \$28.00
Wild Mulberry (shown),
Ravishing Red, Butternut Flare

LOOK 2

cardigan 4836189 \$58.00
Vintage Wine (shown),
Slate Heather, Almond Heather
l/s blouse 4831268 \$45.00
Wild Mulberry (shown),
Symphony Blue

LOOK 3

sweater 4837432 \$28.00
Zephyr Pink (shown), White
Muslin, Carlisle Green,
Cascade Blue, Butternut

OPPOSITE PAGE:

sweater 4836202 \$50.00
Vintage Wine (shown), Almond
Heather, Symphony Blue,
Garland Green





LOOK 1

vest 4833084 \$50.00

Symphony Blue (shown),
White Muslin, Garland Green,
Vintage Wine

sweater 4836185 \$50.00

Carlisle Green (shown),
Slate Heather, Cascade Blue,
Vintage Wine, Coral Ray

l/s blouse 4831264 \$45.00

Sistine Blue (shown)

LOOK 2

sweater 4897422 \$50.00

Chalet Green (shown),
Slate Heather, Harvest Brown,
White Muslin, Mulberry

OPPOSITE PAGE:

sweater 4836186 \$50.00

Slate Heather (shown),
Carlisle Green, Zephyr Pink

l/s blouse 4831300 \$45.00

Symphony Blue Multi (shown)



VIVID BLUES+
FRESHEST GREENS=
NATURALLY YOUTHFUL LOOK

GLAMOUROUSLY-CHEERY WITH JUST A HIT OF CHEEK,
VIBRANT CORALS RULE.



LOOK 1

sweater 4836190 \$45.00
Almond Pretwist (shown),
Carlisle Green, Symphony Blue,
Zephyr Pink

l/s blouse 4831264 \$45.00
Pink Glaze (shown)

pant 4834202 \$50.00
Washed Suede (shown)

LOOK 2

jacket 4833079 \$64.00
Cognac (shown), Eggplant

LOOK 3

s/s sweater 4836188 \$50.00
Wild Mulberry (shown),
Slate Heather, Carlisle Green

OPPOSITE PAGE:

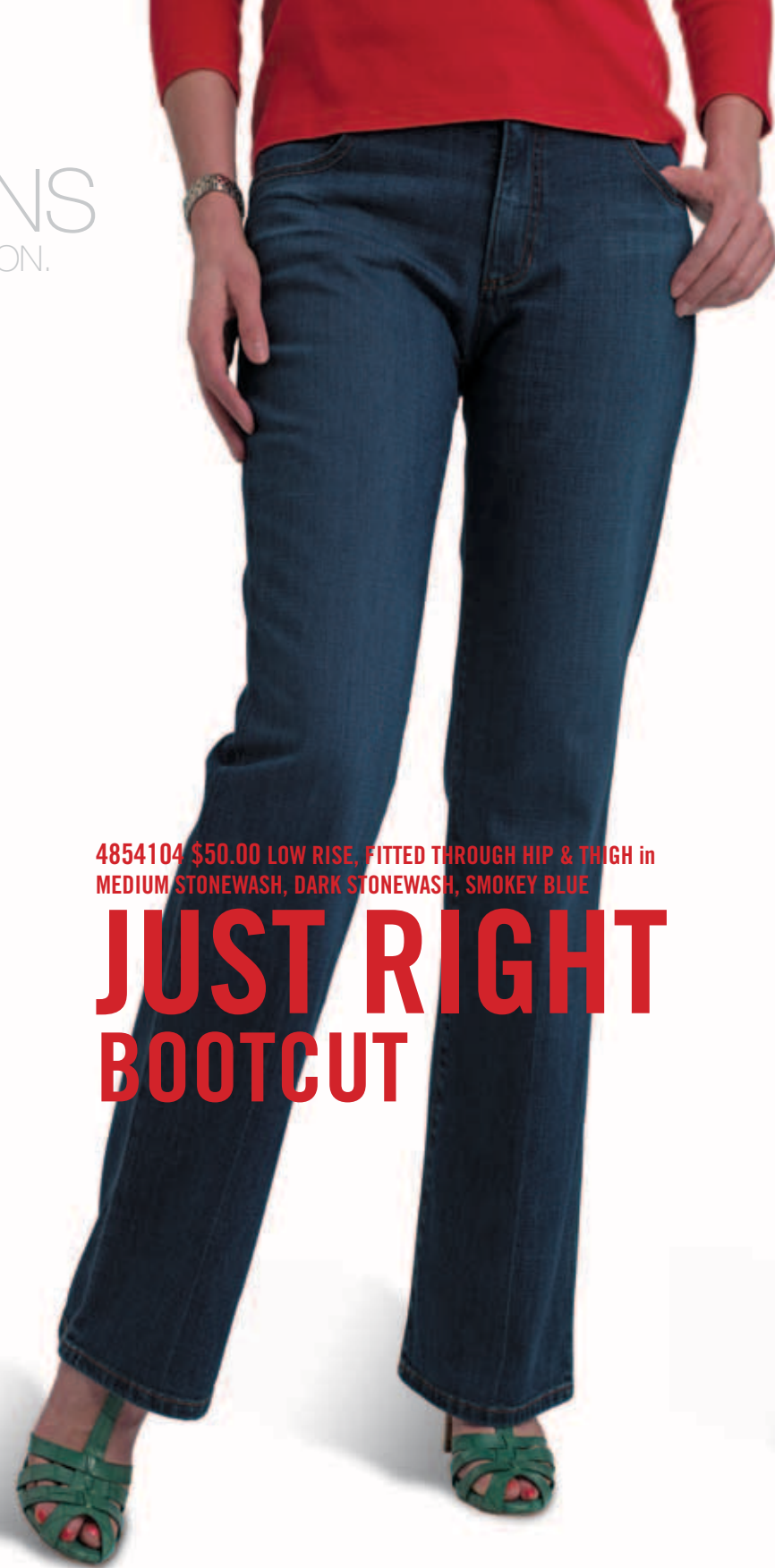
cardigan 4836189 \$58.00
Almond Heather (shown),
Slate Heather, Vintage Wine
l/s blouse 4831309 \$45.00
Zephyr Pink (shown)



JEANETICALLY
SLIMMING JEANS
FOR EVERY LOOK AND EVERY SEASON.

FEATURING **SECRET
SLIMMING
TUMMY PANEL**

Three must-have styles take you from here to there – and everywhere. More importantly, they'll take you there in comfort and in perfect form. Whether you prefer the IZOD Just Right Boot Cut, Favorite Flare or our ultimate Be Skinny Jean, satisfy your preference your way. Our unique Secret Slimming Tummy Panel invisibly controls natural variations in feminine form. All Fashion Gain. No Fashion Pain. IZOD Jeans.



4854104 \$50.00 LOW RISE, FITTED THROUGH HIP & THIGH in MEDIUM STONEWASH, DARK STONEWASH, SMOKEY BLUE

**JUST RIGHT
BOOTCUT**



4854106 \$50.00 REGULAR RISE in DARK STONEWASH, RAW WASH

**FAVORITE
FLARE**



4854105 \$50.00 REGULAR RISE in MEDIUM STONEWASH, DARK STONEWASH, RAW WASH

**BE SKINNY
JEAN**